

Model: MX25P-1TT



1" Oval gear flow meter designed for a broad range of Industrial Process applications.

- Stainless Steel construction
- FEP - Teflon® encapsulated seals
- Max flow rate 120 LPM / 32 GPM
- Temperatures up to 150°C
- Accuracy +/- 0.5% (0.25% available)
- Available with BSP(Rp), NPT, DIN, JIS or ANSI process connections
- Suitable for high viscosity fluids

Select a Flowmeter

Step 1.Size

25 (1")

Step 2.Family

P series -INDUSTRIAL

Step 3.Process Connection

1 - BSP (Rp)

Step 4.Rotor Type

T - High Temp

Step 5.Pulser

T - NPN Open collector (150oC)

Process Connection

Port Size	1"
Connection Type	BSP (Rp)

Material of Construction

Body	316SS
Rotor	316SS
Bushing	Carbon
Seal	FEP (Teflon®)

Technical Specifications

Flow Range	<5cps	>5cps
	10 - 100 LPM	6 - 120 LPM
	2.6 - 26 GPM	1.6 - 32 GPM
Max Pressure	13790 kPa	2000 psi
Temperature	-40 - 150°C	-40 - 302°F
K-Factor	Refer to Flowmeter Data Plate	
Accuracy	+/- 0.5% (0.25% available with reduced range)	
Repeatability	+/- 0.03%	

Service Kits

	Part Number	Description
Rotor Kit	MXS-25P-HTrotor	Rotor set and O-ring
Seal Kit	MXS-25P-seal	Meter Cap O-Ring - FEP (Teflon®)

Accessories

SS Y Strainer	YS025-01
Air Eliminator/Strainer	N/A
Wall Mount Adaptor	MXA-25-WM
3 point cal check	MXA-3ptcal
Pressure test	MXA- PRESSTEST

PULSER OUTPUT TYPE: T



High Temp

The High Temperature Sensor (NPN open collector) is suitable for use in applications with a max. temperature of 150oC

Construction

Material	Stainless Steel	
IP Rating	67	
Mounting	Meter Mount	
Connection	5/8-18 UNF	
Dimensions	Height (mm)	Diameter (mm)
	62 mm	16 mm

Technical Specifications

Switch Type	Pulser - NPN (150oC)	
Approvals	No approvals	
	-	-
Power Supply	Voltage (VDC)	Current (mA)
	Type NPN	4.5 to 30V DC
	-	18mA
-	-	-

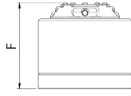
Service Kits

Part Number	Description
MXD-TS	MX High Temp Pulser.

Dimensions

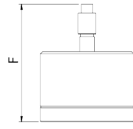
MX25P-1TT

TYPE A



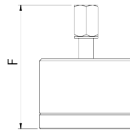
PULSER - STANDARD

TYPE B, N



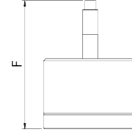
PULSER - Exia

TYPE C



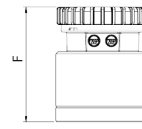
PULSER - Exd

TYPE T



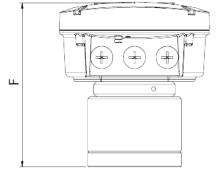
PULSER - ExHT

TYPE D,E

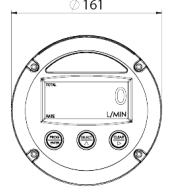
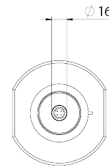
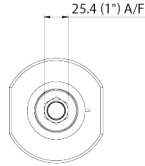
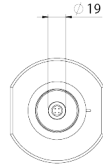
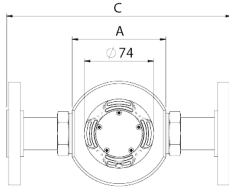
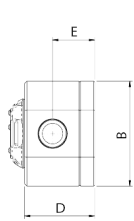


DISPLAY - PR

TYPE F,G,H



DISPLAY - ER



METER SIZE	PORT SIZE	METER AND FLANGE DIMENSIONS					PULSER AND DISPLAY HEIGHT - F					
		A	B	C	D	E	TYPE A	TYPE B, N	TYPE C	TYPE T	TYPE D,E	TYPE F,G,H
MX06	1/4"	71	74	N/A	42	25	59	93	100	104	90	143
MX09	1/4"	71	74	N/A	42	24	59	93	100	104	90	143
MX12	1/2"	81	87	N/A	49	28	66	100	107	111	97	150
MX19	3/4"	100	112	N/A	62	37	79	113	120	124	110	163
MX25	1"	100	112	240	75	45	92	126	133	137	123	176
MX40	1 1/2"	120	137	240	103	61	120	154	161	165	151	204
MX50	2"	140	163	264	124	72	141	175	182	186	172	225