

CFR21

Flash Link. USB REUSABLE TEMPERATURE DATA LOGGER


Laboratory / R&D

Pharmaceutical

Green House

Refrigeration Vans

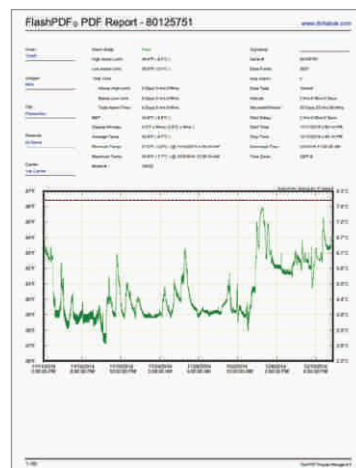
Ware Housing

Fruits & Vegetables

Product Specifications :

Probe Measurement Range	-112°F to 116°F (-80°C to 47°C)
Operating Range	-4.0°F to 122°F (-20°C to 50°C)
Temperature Resolution	0.1°F/°C
Accuracy	±1.0°F from -40°F to 77°F (±0.5°C from -40°C to 25°C) ±2.0°F from 112°F to -40°F (±1.0°C from -80°C to -40°C) ±2.0°F from 77°F to 116°F (±1.0°C from 25°C to 47°C)
Data Capacity	32,496 points
Data Download Time	5 seconds typical for 3823 points
Programmable Alarm Levels	High & Low levels over entire range
Battery	Two AAA Lithium batteries, LCD % remaining power indicator
Dimensions/Body	1.57in x 3.66in x 0.94in (40mm x 93mm x 24mm)
Casing	ABS plastic
Probe Size	0.15in Dia x 0.98in (3.8mm Dia x 25mm) 6.56 ft. (2m) teflon cable
Weight	2.24 oz (63.5 grams)
Certification	CE Mark, NIST traceable, RoHS Compliant
FAA Compliance	RTCA/DO-160
Display	LCD, Red LED Alarm
Waterproof Rating	IP64 with silicon cap on
Storage conditions	-4.0°F to 122°F (-20°C to 50°C), 0% to 95% RH
System Requirements	Windows PC with Current Operating System, Adobe Reader
Programming	FlashPDF Program Manager software
Download Requirements	Direct USB connection to PC

Note : Additional Charges for Software



Note : CFR21 Software at additional charges

Model 40530

- Single channel, external blunt tip probe
- Automatically generates PDF report and CSV file
- Ideal for shipments with dry ice
- User programmable: manual or auto start, logging intervals, hi/low alarms
- Large, easy to read LCD
- Low battery indicator on LCD



HTA INSTRUMENTATION (P) LTD.,

An ISO 9001: 2015 Certified Company & NABL Accredited Calibration Laboratory as per ISO/IEC 17025:2017

Your One Stop For Instrumentation Supply, Automation & Calibration

73, Ramachandra Agrahara, Near T.R. Mills, Chamarajpet, Bangalore - 560018, INDIA.

Phone : 080-26749750, 26759253, 26740681 E-mail : sales@htaipl.com Website : www.htaipl.com

