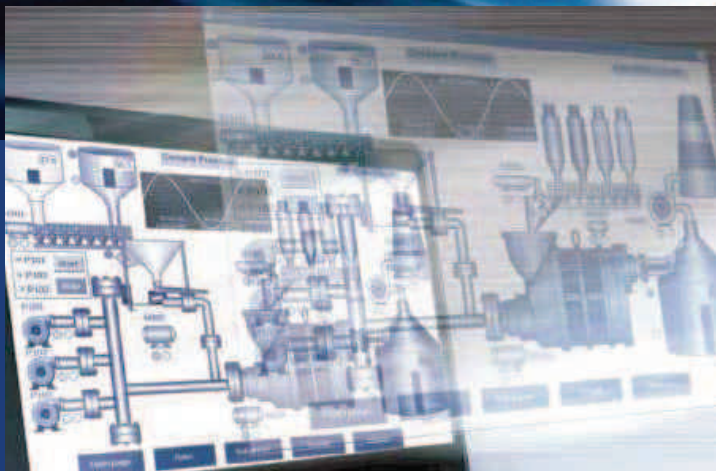
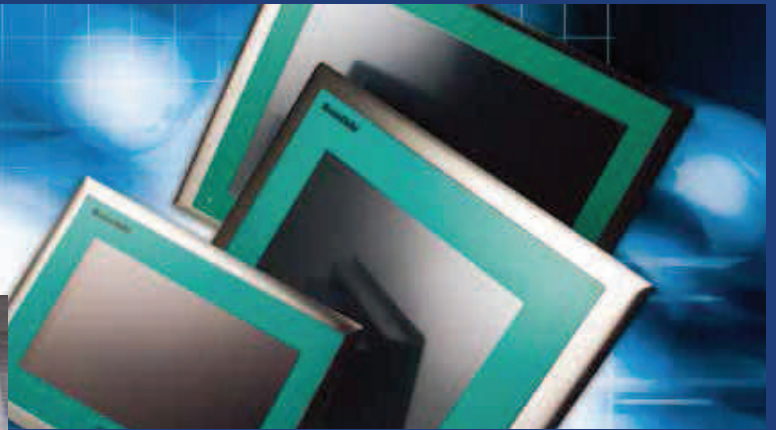


Human Machine Interfaces

BrainChild



• HMI Hardware Features :

- Five Models in four sizes of 4.3 ", 7 ", 10 " & 15 "
- Two Low-cost models HMI450 & 730 with optional Ethernet & SD slot
- Three High-performance HMI750, 1050 & 1550 with standard Ethernet & SD slot
- Touch Panels, higher resolution and all in 65,536 colors
- USB host, 2 Serial ports
- Networks of Profibus-DP, ProfiNet, DeviceNet, EtherNet/IP, CANopen, CC-Link
- Advance and reliable WinCE 6.0* platform with more features for efficient & sophisticated control solutions
- HMI 750, 1050, 1550 standard aluminum front bezels, optional stainless steel fronts for food, beverage & pharmaceutical industries
- Rugged Stainless Steel front bezels with IP66K for high protection on dust & water and polished surface for easy cleaning
- Large memory of 128MB Flash, 256MB SDRAM, sound input+output, 3DI+3DO
- USB Host port used for keyboard, USB stick and Mouse
- Horizontal or Vertical Installation & display
- Wide range of power supply 11-36 VDC or 90-250VAC
- LED backlight for even-color displays and long lifetime
- Open Win6.0* Core & Professional panels for OEM business

Smart Panels Specifications



HMI 450



HMI 730



HMI 750



HMI1050



HMI1550

Model	HMI 450	HMI 730	HMI 750	HMI1050	HMI1550
Display Size	4.3"	7"	7"	10 "	15 "
Resolution (Wx H in pixels)	480 x 272	800 x 480	800 x 480	1024 x 768	1024 x 768
Display Type	TFT wide touch screen	TFT wide touch screen	TFT wide touch screen	TFT touch screen	TFT touch screen
Colors	65,536	65,536	65,536	65,536	65,536
Touch Screen Type	Resistive analog	Resistive analog	Resistive analog	Resistive analog	Resistive analog
Active Display area (WxH mm)	95 X 54	152 X 91	152 X 91	203 X 152	304 X 228
Display position	Both Horizontal & Vertical	Both Horizontal & Vertical	Both Horizontal & Vertical	Both Horizontal & Vertical	Both Horizontal & Vertical
MTBF backlight at 25°C	30,000 hrs	50,000 hrs	50,000 hrs	50,000 hrs	50,000 hrs
Backlight	LED	LED	LED	LED	CCFL
Brightness Adjustment	Yes	Yes	Yes	Yes	Yes
Screen Saver	Yes	Yes	Yes	Yes	Yes
Language Fonts	Unicode including simplified and Traditional Chinese, Japanese & Korean				

Main Hardware

Processor, CPU speed	ARM Cortex-A8 667Mhz	ARM Cortex-A8 667Mhz	ARM Cortex-A8 1Ghz	ARM Cortex-A8 1Ghz	ARM Cortex-A8 1Ghz
Flash Memory (ROM)	128MB	128MB	128MB	128MB	128MB
SDRAM (RAM)	256MB	256MB	256MB	256MB	256MB
Operation System	WinCE6.0 [®]	WinCE6.0 [®]	WinCE6.0 [®]	WinCE6.0 [®]	WinCE6.0 [®]
Real time Clock	Yes	Yes	Yes	Yes	Yes
Buzzer	Yes	Yes	Yes	Yes	Yes
Sound input + output, 3DI + 3DO	N.A.	N.A.	Option	Option	Option
SD Card slot	Option	Option	Yes	Yes	Yes

Interfaces

RS232C, DB9 Male	1	1	1	1	1
RS232C/RS422/RS485, DB25 Female	1	1	1	1	1
Ethernet 10/100 Mbps, RJ45	1 Option	Option	1	2	2
USB Host	1	1	1	1	1

Other Network(all slaves)

Profibus-DP, Profinet	Option	N.A.	Option	Option	Option
DeviceNet, EtherNet/IP	Option	N.A.	Option	Option	Option
CANopen	Option	N.A.	Option	Option	Option
CC-Link	Option	N.A.	Option	Option	Option

General Specification

Power Supply	11-36 VDC	11-36 VDC, 90-250VAC	11-36 VDC, 90-250VAC	11-36 VDC, 90-250VAC	11-36 VDC, 90-250VAC
Consumption (w/o sound output)	10W	12W	13W	15W	27W
Power on LED indicator	Yes	Yes	Yes	Yes	Yes
Outer dimensions (WxHxD mm)	140 x 116 x 57	212 x 156 x 57	212 x 156 x 57	325 x 263 x 56	400 x 310 x 56
Mounting depth (mm)	51	51	51	50	50
Panel cutout (W x H mm)	123 ⁺¹ x 99 ⁺¹	197 ⁺¹ x 141 ⁺¹	197 ⁺¹ x 141 ⁺¹	310 ⁺¹ x 248 ⁺¹	367 ⁺¹ x 289 ⁺¹
Protection	IP65 front, IP20 rear	IP65 front, IP20 rear	IP65 front, IP20 rear	IP65 front, IP20 rear	IP65 front, IP20 rear
Front bezel, Housing	Plastic, Plastic	Plastic, Plastic	Aluminum, Plastic	Aluminum, Plastic	Aluminum, metal
Stainless Steel front bezel (option)	N.A.	N.A.	Option, IP66K	Option, IP66K	Option, IP66K
Installation	Panel Mount	Panel Mount	Panel Mount	Panel Mount	Panel Mount
Net weight (Kgs)	0.5	1.2	1.4	3.6	5.1

Ordering Code



HMI 450	<input type="checkbox"/> 1	<input type="checkbox"/> 0	<input type="checkbox"/>	<input type="checkbox"/>	<input type="checkbox"/>	<input type="checkbox"/>	<input type="checkbox"/> 0
HMI 730	<input type="checkbox"/>	<input type="checkbox"/> 0	<input type="checkbox"/>	<input type="checkbox"/>	<input type="checkbox"/> 0	<input type="checkbox"/>	<input type="checkbox"/> 0
HMI 750	<input type="checkbox"/>	<input type="checkbox"/>	<input type="checkbox"/> 1	<input type="checkbox"/> 1	<input type="checkbox"/>	<input type="checkbox"/>	<input type="checkbox"/>
HMI 1050	<input type="checkbox"/>	<input type="checkbox"/>	<input type="checkbox"/> 1	<input type="checkbox"/> 1	<input type="checkbox"/>	<input type="checkbox"/>	<input type="checkbox"/>
HMI 1550	<input type="checkbox"/>	<input type="checkbox"/>	<input type="checkbox"/> 1	<input type="checkbox"/> 1	<input type="checkbox"/>	<input type="checkbox"/>	<input type="checkbox"/>

Power supply

- 1: 11 to 36 VDC
- 2: 90 to 250 VAC

Sound input + output, 3DI + 3DO

- 0: none
- 1: yes

SD card Slot

- 0: none
- 1: yes

Ethernet

- 0: none
- 1: yes

Other Networks (all slaves)

- 0: none
- 1: Profibus-DP
- 2: ProfiNet
- 3: DeviceNet
- 4: EtherNet/IP
- 5: CANopen
- 8: CC-Link

Software

- 1: free basic editing & data acquisition software **Panel Studio**
- 2: extensive software **Panel Studio Plus** with Symbol Factory
- 3: No software, WinCE 6.0[®] Core platform only
- 4: No software, WinCE 6.0[®] Pro platform for SCADA

Enclosure

- 0: Standard HMI 450, 730: all plastic, 750: aluminum front, plastic rear, HMI 1050, 1550: aluminum front, metal rear
- 1: Option HMI 750, 1050, 1550 only, stainless steel front, high pressure water protection IP66K, good for food, beverage, tobacco & pharmaceutical industries

Optional Accessories

Part Number	Description
CA-PC3-80	program download cable from PC to HMI, RJ45, Ethernet cross over

Note: Please refer part numbers of PLC cables to a separated list.



HTA INSTRUMENTATION (P) LTD.,

An ISO 9001: 2015 Certified Company & NABL Accredited Calibration Laboratory as per ISO/IEC 17025:2017

Your One Stop For Instrumentation Supply, Automation & Calibration
73, Ramachandra Agrahara, Near T.R. Mills, Chamarajpet, Bangalore - 560018, INDIA.

Phone : 080-26749750, 26759253, 26740681 E-mail : sales@htaipl.com Website : www.htaipl.com

