

LOOPPOWERED COMPACT LED PLUG ON INDICATOR WITHOUT OUTPUT



• Application

The Loop Power Compact LED Display **LEDD-01-02 O/P** is fit for all of the Transmitters i.e. Pressure, Differential Pressure, Temperature, Flow, pH, acceleration and so on, which are having 4~20 mA, 2 wire output.

• Features

- The LEDD-01 Indicator give only Open Collector Output
- By using LEDD-01 Open Collector Output we can drive the Relay
- The Relay can drive the Device up to 230Volts
- Plug and Play
- For 4 to 20mA Output
- Self Powered
- Compact Design
- Easy Programming with Push Buttons
- Ingress Protection IP 65
- Reverse Polarity
- Two OPTO Switch O/P
- Low Power Consumption
- Visible in the Dark Environment
- 16 Bit ADC MCU Inside
- LED can Work at 3mA

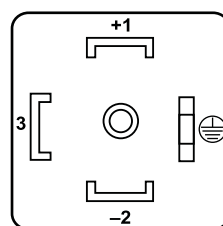
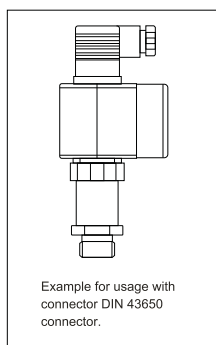
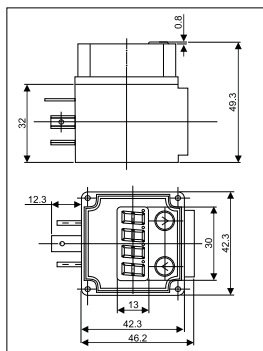


EQ-LEDD-01-020/P

• Specification

| | |
|-----------------------------|---|
| Display Type | 4-digit, Red LED display, Digit Height 7 mm, digit width 4.85mm |
| Range | -1999 to 9999 |
| Accuracy | ± 0.1% +1 Digit |
| Decimal Point | Configurable |
| Digital Damping | 0 to 20 s (step 0.5 s) |
| Power Supply | Not Required, 4 to 20 mA Loop Powered |
| Voltage drop | £ 4.5 V |
| Short-circuit protection | Permanent |
| Reverse Polarity Protection | Max. Current: Approx. 200 mA |
| Electrical Connection | DIN 43650 Connection |
| Operating Temperature | -20 to 70°C |
| Storage Temperature | -30 to 85°C |
| Display Housing | ABS |
| Weight | Approx.80g |
| Ingress Protection | IP 65 |

• DIMENSION / ELECTRICAL CONNECTION



Pin 1 Supply +
Pin 2 Supply -
Pin 3 Ground