

PAPERLESS RECORDER TOUCH SCREEN



Features :

- 12.1 " Touch Screen
- Plus Versions - Math, External Channels, Batch, Counter, Totalizer, Custom Display, FDA 21 CFR Part 11
- Screen Saver, Email Option
- Standard PC Software Historical Viewer & Configuration
- Safety Standards - **CE, ROHS, cULus**
- **CE** : En61010-1(IEC1010-1) over Voltage category II, Pollution degree 2
- Protective Class : IP65 front panel for indoor use, IP20 housing and terminals

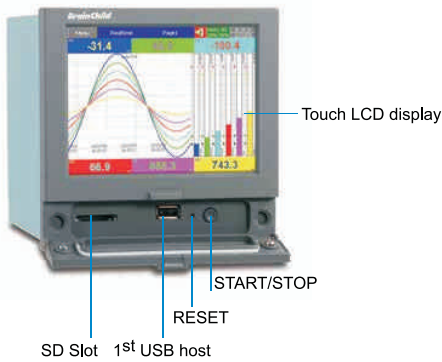
Specifications :

Display	12.1 " TFT Touch Screen
Resolution	1024 x 768
Input Channels	6, 12, 18, 24, 30, 36, 42, 48 Channels
True Universal inputs	mA, mV, V, T/C , RTD, Pulse
The Fastest sampling Rate	100m/Sec, 1Sec.....2mins
MTFB Backlight at 25 °C	60,000 hrs
Backlight	LED
A Faster CPU	ARM Cortex-A8, 1 Ghz
Internal Flash Memory/ Ram	256 MB
Ethernet	Modbus TCP/ IP
RS-232 / 422 / 485 Modbus	Optional RS-232 or RS-422 / 485 Modbus RTU
SD Card Slot, USB host x2	Standard, one USB in the front, another USB in the back
Pulse Input	Optional DI card offering either logic or high frequency pulse counter
START / STOP key	Quick start possible later
Calibration Correction	On-site calibration possible, or using handy features of offset and gain for correction
Extensive S/W Data Acquisition Studio	Real-time Monitoring (Optional)
Power Supply	90-250VAC or 11-36VDC (Optional)
Outer Dimensions (W x Hx L mm)	288 x 288 x 189
Shorter Mounting Depth (mm)	171
DIN Panel Cutout (W x H mm)	281 x 281
Protection	IP65 Front, IP20 Rear
Operating Temperature	0 °C to 50 °C
Storage Temperature	-30 °C to 70 °C
Standards	CE Approved

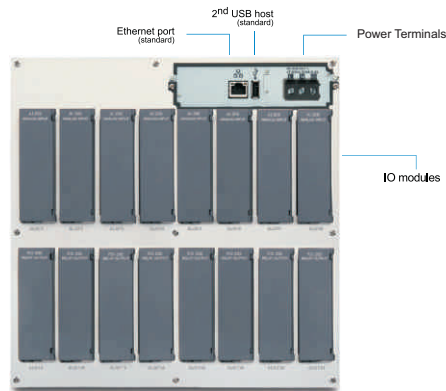
Smart Mechanism

Front View, Back view

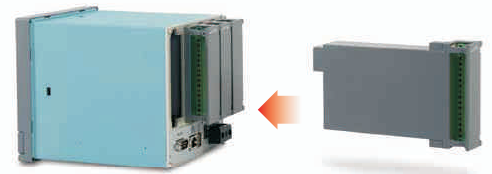
PR30 FRONT VIEW



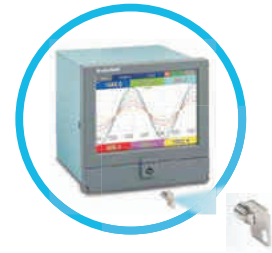
PR30 BACK VIEW



IO Modules Easy for Expansion

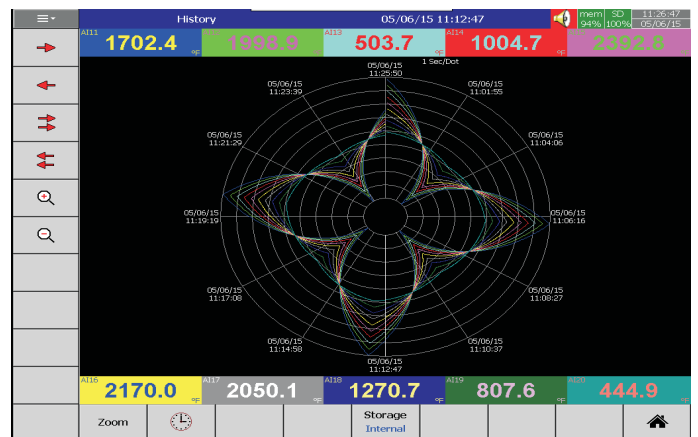
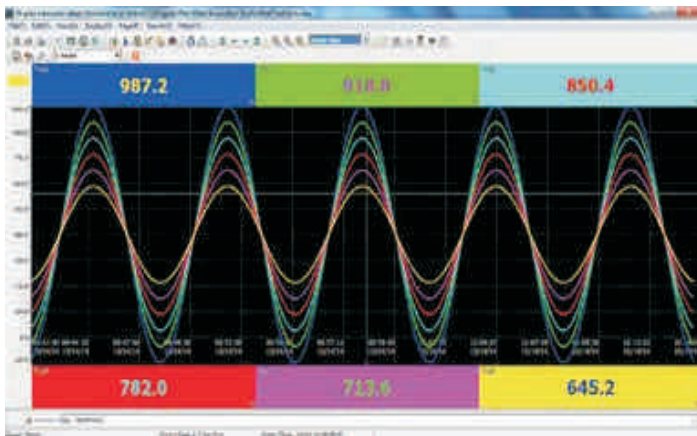


Portable Recorders Security Key



I. Historical Viewer (Standard Software)

It can Display Historical Trends, **Historical Circular Charts** Historical Alarms, Events, and then print it. It can search data by time, time period, tag, alarm events and remarks, It also can export data in CSV format.



Extensive software Data Acquisition Studio (optional)

II. Realtime Viewer

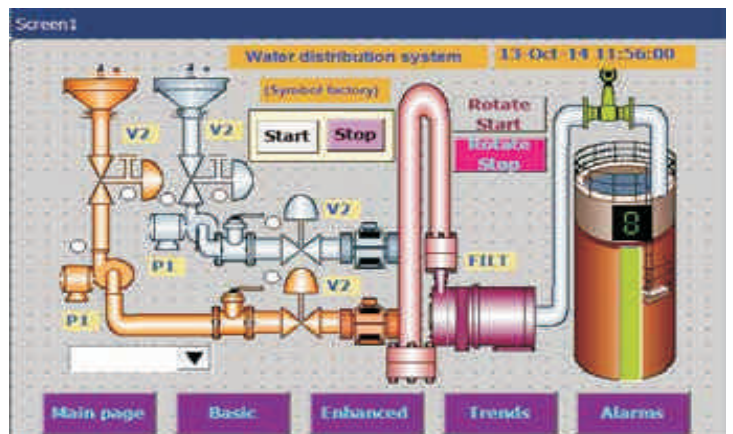
Besides Configuration & Historical Viewer, it offers additional software real time viewer for real-time monitoring



Customized Display Equal to HMI (Optional)

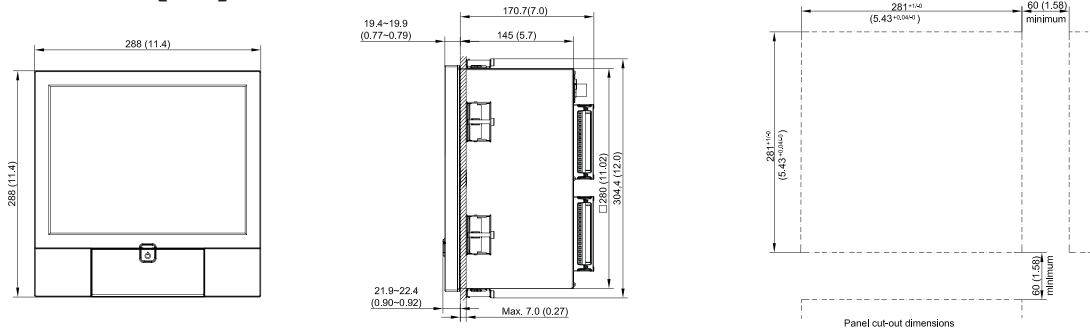
III. Panel Studio

It Plus version 2 or 3 of Firmware is purchased, additional software Panel Studio is offered for editing custom display. The users can use it to edit specific displays on PC first, and then download it onto recorders. The custom edited displays will be additional pages to standard ones.



Dimensions in mm (in)

PR30



PR30 ORDERING CODE

- PR3006 (6 analog inputs)
- PR3012 (12 analog inputs)
- PR3018 (18 analog inputs)
- PR3024 (24 analog inputs)
- PR3030 (30 analog inputs)
- PR3036 (36 analog inputs)
- PR3042 (42 analog inputs)
- PR3048 (48 analog inputs)

Relay outputs

- 0: none
- 1: 6 relays
- 2: 12 relays
- 3: 18 relays
- 4: 24 relays

Digital inputs

- 0: none
- 1: 6 channels
- 2: 12 channels
- 3: 18 channels

Analog outputs

- 0: none
- 1: 6 channels

Power

- A: 90-250 VAC, 50/60 Hz
- D: 11-36 VDC

Communication

- 0: standard Ethernet
- 1: Ethernet + RS232
- 2: Ethernet + RS-422/485

Firmware

- 0: standard version
- 1: Plus version 1 with extra mathematics, external channels, batch & FDA 21 CFR part 11
- 2: Plus version 2 with custom edited display, an editing software Panel Studio to be supplied
- 3: Plus version 3 including Plus version 1+2 above

PC software

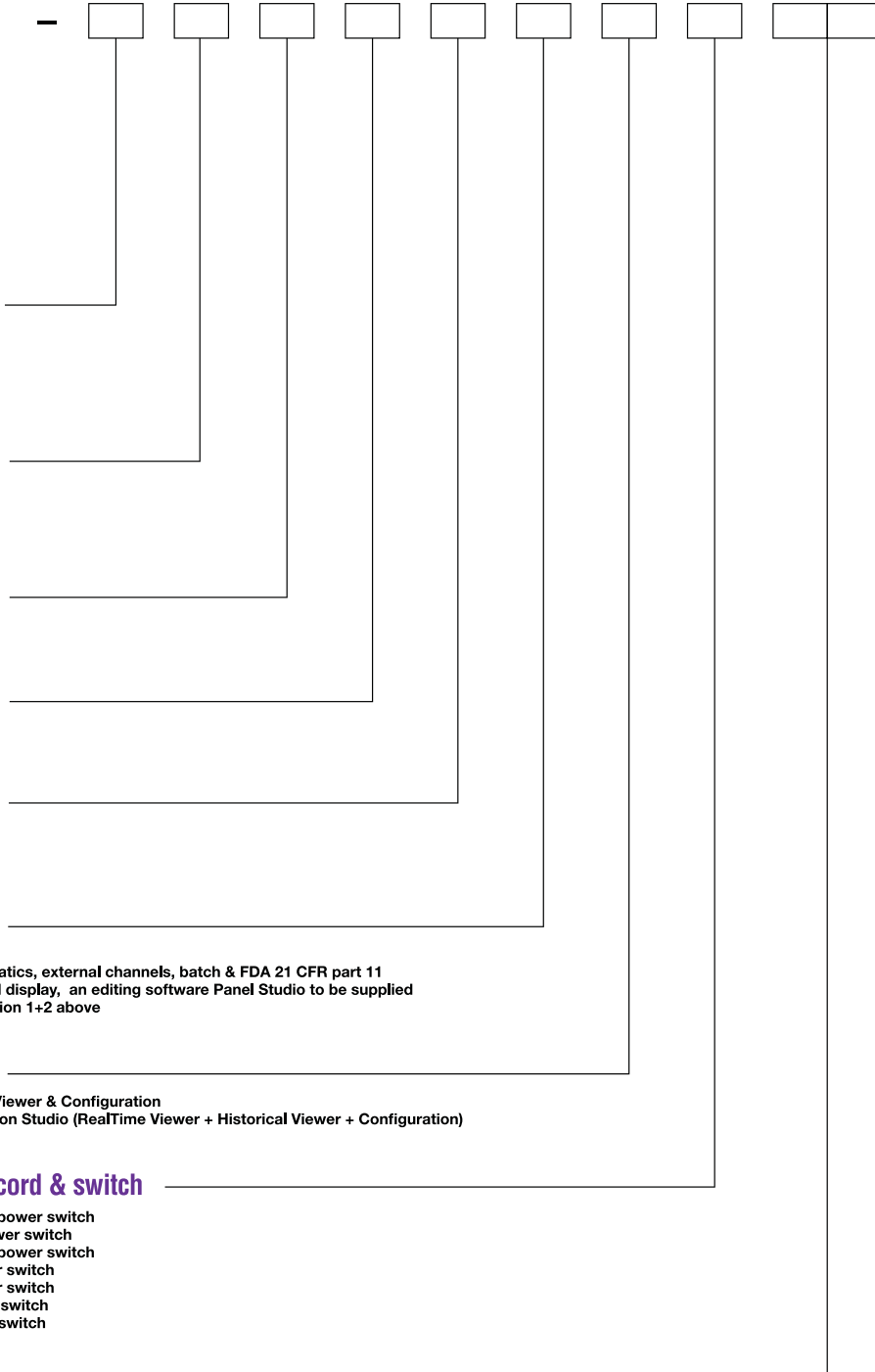
- 1: free basic software of Historical Viewer & Configuration
- 2: extensive software Data Acquisition Studio (RealTime Viewer + Historical Viewer + Configuration)

Mounting types, power cord & switch

- 0: panel mount, no power cord, no power switch
- 1: panel mount, no power cord, power switch
- 2: portable, UL & CSA power cord, power switch
- 3: portable, VDE power cord, power switch
- 4: portable, SAA power cord, power switch
- 5: portable, BS power cord, power switch
- 6: portable, GB power cord, power switch

Special options

- 00: none
- S1: 16G SD card
- S2: 32G SD card



HTA INSTRUMENTATION (P) LTD.,

An ISO 9001: 2015 Certified Company & NABL Accredited Calibration Laboratory as per ISO/IEC 17025:2017

Your One Stop For Instrumentation Supply, Automation & Calibration

73, Ramachandra Agrahara, Near T.R. Mills, Chamarajpet, Bangalore - 560018, INDIA.

Phone : 080-26749750, 26759253, 26740681 E-mail : sales@htaipl.com Website : www.htaipl.com



ISO 9001:2015 CERTIFIED
Certificate No. IQSC202010014